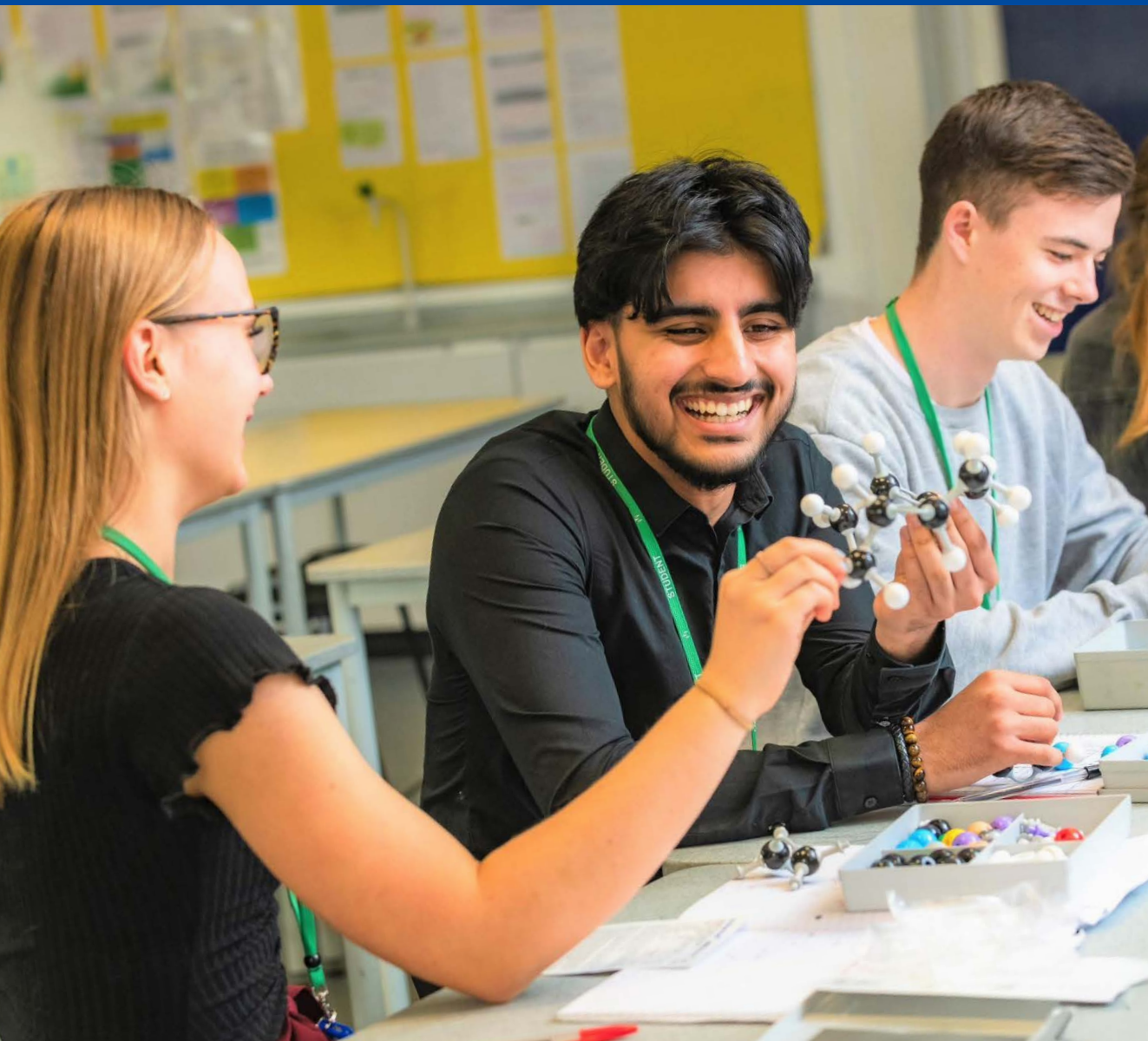


SIXTH FORM PROSPECTUS

2024

SUCCESS IS AN ATTITUDE



WELCOME TO THE CHALFONTS 6TH FORM

The Chalfonts Community College is committed to being a learning community. We invite students who have reached the age of 16 and who want to carry on their learning to join us.

We are dedicated to helping 6th formers achieve success in their chosen learning pathway. The only condition is that you enjoy academic work, have a thirst for knowledge and are prepared to work hard. If you can commit to these expectations we will guarantee your success.

6th form students play a major part in determining the success of this school. We are immensely proud of our current students, their predecessors and all of their achievements. We have high expectations of both students and teachers and we never settle for anything less than your personal best.

As a 6th form student you will be treated with respect. You will be trusted and will enjoy privileges and freedoms which are not afforded to younger students. In return, we expect you to be a mature, responsible young adult and a good role model for younger students.

Teachers enjoy working with 6th form students; they appreciate their maturity and the fact that they have chosen to continue their education. They want to communicate and share their knowledge and passion for their subject and will always go that extra mile to help and support you.

All students are allocated a group tutor. Your tutor will be concerned with your personal welfare; they will support your learning, monitor your progress closely and help you to set targets to achieve your full potential.

You will also be helped to develop the independent learning skills necessary for success with us and for the next stage, whether that is Higher Education or employment.

Student destinations in the last five years include a wide range of universities such as Birmingham, Exeter, Loughborough, Queen Mary, Southampton and UCL. With an A*-C pass rate of 66% and an A*-E pass rate of 96%, plus a long-standing reputation for excellence in vocational courses, we are confident that we have a recipe for success. How much would you like to be a part of it?

Mr Martyn Way BEd (Hons)
Leader for 6th Form



“Staying at The Chalfonts was the best decision I have ever made. The 6th Form staff are very supportive; it is a friendly environment and Year 12 has been my best year at school.”

Aswini Rejeesh - Head Girl 2023



SUCCESS IS AN ATTITUDE

FREQUENTLY ASKED QUESTIONS...

What makes the 6th Form at The Chalfonts so different to other schools?

The general ethos of the 6th Form is friendly and welcoming, and this is supported by the fact that external students always comment on how easy it is to settle in at The Chalfonts. We push students hard but also understand that supporting them fully is the key to success.

How is support provided for students in the 6th Form?

We care about students at The Chalfonts and understand the difficulties that may be experienced in the transition between GCSE and A Level. For half an hour every lunch time Mr Way provides a drop-in service for students when they need guidance or support. This service is particularly helpful during the transition at the beginning of the year. In addition, tutors, subject teachers and Mr Way provide support during the transition to Year 12, the university application process and careers advice for those entering the world of work. This is in the form of dedicated sessions and external speakers to help you through the process.

How important are the subject choices I have to make and what options are available to me?

The step up from GCSE to A Level is massive and your subject choices are extremely important. In order to excel and achieve outstanding results, you must choose subjects that you enjoy and are good at. You should also take in to consideration the combination of subjects and whether coursework based or exam based courses are best suited to you.

What opportunities are there for personal development at The Chalfonts?

The Chalfonts nurtures leadership and resilience in order to prepare students for the competitive world beyond school. There are a multitude of opportunities available at The Chalfonts; the best being the chance for students to offer their services to departments to assist teachers and students. This can vary from guidance on GCSE coursework to assisting with lessons and extra-curricular activities. Not only is this beneficial to the school but it also builds character and adds value to CVs and UCAS applications.

What qualities are important in a successful 6th former?

Qualities of persistence and determination are fundamental because post-16 courses are demanding. The ability to learn from mistakes and the acceptance of advice is crucial for success due to the jump between GCSE and A Level. Being gifted is not necessarily as important as hard work and determination; attitude can make the difference as ability can only take you so far. Students must enjoy academic work and have a thirst for knowledge. Most importantly, students must be resilient. When things get tough with exams and coursework, students must maintain a strong work ethic in order to reach their potential.

Why should I choose The Chalfonts for 6th Form?

It is a friendly place to be. Teachers in all subjects push students to achieve their potential and they work extremely hard on your behalf. You won't get any better grades if you go elsewhere; we will get the best out of you!



History students at Hughendon House, High Wycombe - The country home of Benjamin Disraeli

WHAT DO STUDENTS THINK OF THE CHALFONTS 6TH FORM?

My first impression as a new student coming into The Chalfonts 6th Form was how welcoming the school was; the staff and students helped me settle in quickly and easily. I took BTEC Sport and the teachers were very friendly and also really helpful if I was unsure about my coursework. I really enjoyed both Year 12 and Year 13.

Amber Restall - currently studying Sport & Exercise Psychology at Portsmouth University

A Level Chemistry at the Chalfonts is a challenging but truly rewarding subject. The course includes a wide variety of modules, ranging from organic chemistry to physical chemistry and many other fascinating topics. You undertake many experiments, both in groups and individually, to help widen your knowledge and expand your laboratory skills. Your teachers will be very supportive and will happily help you if you are struggling. Above all else, they will encourage you to reach your full potential. I would highly recommend this course.

Isabella Garcia - currently studying Biomedical Science at the University of Kent

I picked A Level Business Studies as a result of my enjoyment of the GCSE course but I think it has an important role in teaching people vital skills for the future. It will prepare me for how to operate in the business world and give me transferable skills for later life.

Amaya Ahmed - Year 12 Business student

Spanish allows you to develop yourself socially as you express your thoughts in a different way. The Languages department understand and support you when study becomes challenging and you develop a wider understanding of different cultures.

Laurence McGrath - Head Boy

Studying A Level Biology has helped me to become confident in my practical work, which I found to be my greatest challenge at GCSE. During the course I have found my critical thinking skills, and my understanding of complex biological concepts to have significantly improved.

Aswini Rejeesh - Year 13 Biology student

Choosing A Level Psychology has been a great decision. The subject is fascinating. It has inspired me to want to study marketing at university. I would recommend studying Psychology at A Level to anyone who is interested in the mind and human behaviour.

Huey Couceiro-Hales - Year 13 Psychology student

Product Design is an interesting subject to take, and during my time on the course I have learnt many new skills. We learn how the designers of the past have inspired designs of the future and you also learn lots about manufacture and materials. The coursework is my favourite part as you get the independence to design and produce your own product. It's a great course.

Matthew McGrail - Year 12 Product Design student

A level English is definitely a big step up from GCSE, however it is much more enjoyable and interesting as you study texts in which you can explore a deeper meaning and you will be able to analyse it from the skills learnt at GCSE. Studying English helps to sharpen your analytical skills and enables you to take a text and be able to find themes and connect it to other texts, theories and historical events. You are demonstrating that you can handle complex ideas, search for patterns and interpret information in a wider context, which will help you significantly in the future.

Kristen McCarthy - Year 13 English student

Business BTEC is a fantastic course which demonstrates a completely different approach to A Level if you are looking to venture into the business world. I feel it has a more realistic and practical approach which enables students to create their own campaigns as if working for a real business!

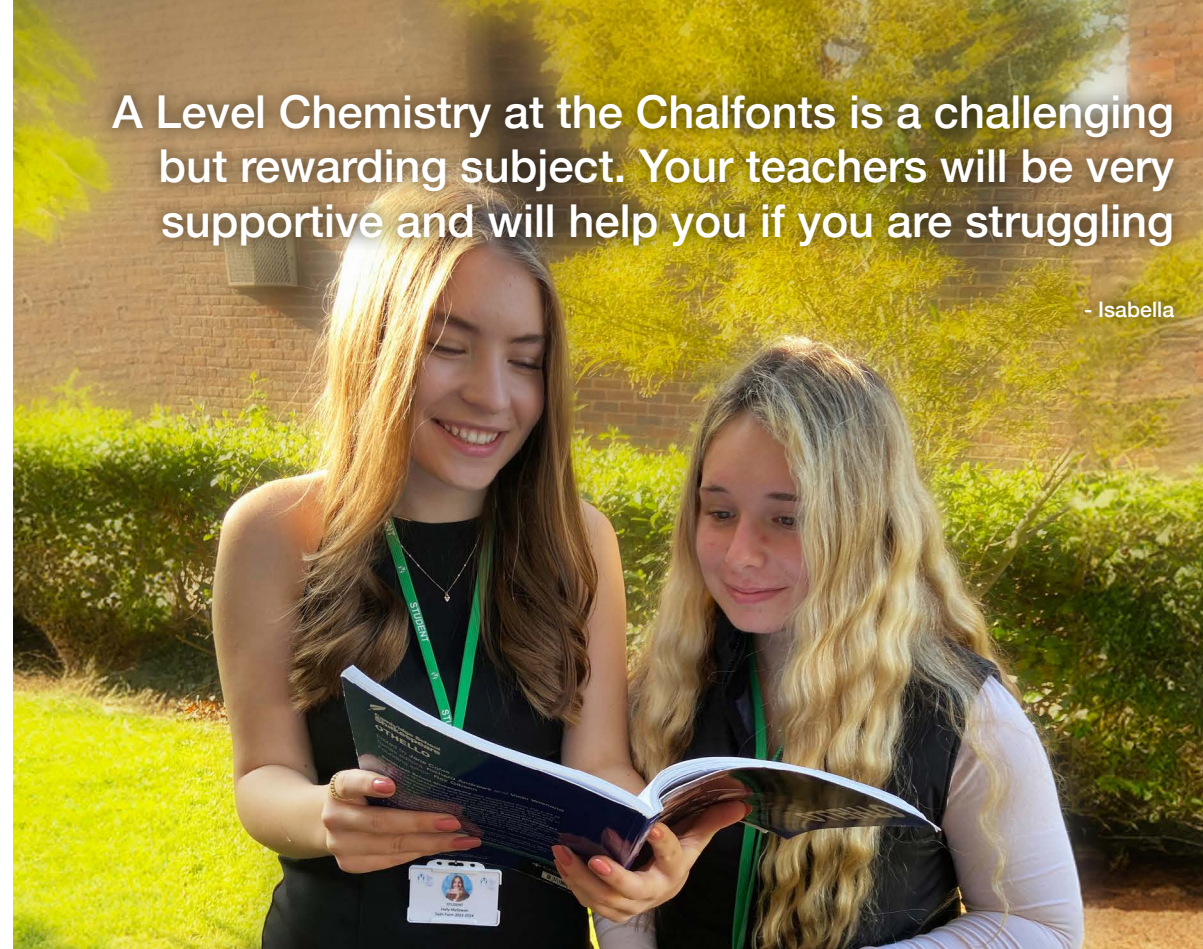
Katie Pereira - Year 13 Btec Business student

A Level Maths at The Chalfonts teaches you more than just mathematical skills. It provides you with the ability and desire to learn independently so that you can tackle even the hardest topics. It develops your problem-solving skills and encourages you to become a critical thinker.

Brandon Tollan - currently studying Physics at Imperial College London

A Level Chemistry at the Chalfonts is a challenging but rewarding subject. Your teachers will be very supportive and will help you if you are struggling

- Isabella



My first impression as a new student coming to The Chalfonts 6th Form was how welcoming the school was.

Chloe Henderson - Year 12 Student

6TH FORM COURSES & ENTRY REQUIREMENTS

A LEVEL COURSES

- A small number of students will start with 4 A Levels in Year 12, and then continue with three subjects in Year 13
- The vast majority of students will start with three A Level subjects and continue with all three through to Year 13
- All students following an Advanced Level programme of study must follow at least three subjects
- All subjects are internally examined at the end of Year 12 and externally examined at the end of Year 13
- 3 A Level passes will usually be required for university entrance, although 2 may be acceptable for some courses
- A Levels can be taken in conjunction with BTEC, RSL and other Diploma courses, subject to timetabling

A Level Subjects	Exam Board	Maths/English Language Grade	Minimum Entry Requirements
Art - Fine Art	Edexcel	Maths 5, English 5	GCSE 6 Art & Design
Biology	AQA	Maths 6, English 5	GCSE 6 in Triple Science or 6/6 in Combined Science
Business Studies	Edexcel	Maths 6, English 6	GCSE 6 Business Studies (if studied)
Chemistry	OCR	Maths 6, English 5	GCSE 6 in Triple Science or 6/6 in Combined Science
Computer Science	OCR	Maths 6, English 5	GCSE 6 Computing or GCSE ICT 7 plus GCSE Maths 7
Design & Technology /Product Design	AQA	Maths 5, English 5	GCSE 6 Technology or a Distinction in EAL Engineering
Drama	Edexcel	Maths 5, English 6	GCSE 6 Drama
Economics	Edexcel	Maths 6, English 6	As opposite
Environmental Science	AQA	Maths 6, English 6	GCSE 6 in Triple Science or 6/6 in Combined Science, or a 6 Geography
English Literature	AQA	Maths 5, English 6	GCSE 6 both English Literature and Language
French	Edexcel	Maths 5, English 5	GCSE 7 French
Geography	Edexcel	Maths 6, English 6	GCSE 6 Geography
History	AQA	Maths 5, English 5	GCSE 6 History
Law	AQA	Maths 5, English 6	GCSE 6 or above in a Humanities subject
Mathematics	Edexcel	Maths 7, English 5	GCSE 7 Mathematics
Maths - Further	Edexcel	Maths 8, English 5	GCSE 8 Mathematics
Media Studies	EDUQAS	Maths 5, English 6	GCSE 6 in Media (if studied) or 6 in English Lang/Lit if not
Photography	Edexcel	Maths 5, English 5	GCSE 6 Art/ Digital Art
Physics	AQA	Maths 6, English 5	GCSE 6 in Triple Science or 6/6 in Combined Science
Psychology	AQA	Maths 6, English 6	GCSE 6 in 2 of the Triple Science or 6/6 in Combined Science
Religious Studies & Ethics	AQA	Maths 5, English 6	GCSE RE 6 or a grade 6 or above in English Language
Spanish	Edexcel	Maths 5, English 5	GCSE 7 Spanish

LEVEL 3 DIPLOMA/CERTIFICATE COURSES

- Most Diploma courses can be combined with one or two other A Levels
- Each Diploma course has an equivalent value to A Levels
- These courses are modular with continuous assessment and some external testing

Level 3 Diplomas/ Certificates	Exam Board	Maths/English Language Grade	Minimum Entry Requirements	A Level equivalent value or maximum UCAS points
Beauty Therapy - NVQ L2/3	VTCT	Maths 4, English 4	5 GCSEs at grade 4 or above, a letter of application and an interview This course can be taken alongside a single A level subject to timetabling	Pass at L2 – 4 GCSE grades A-C Pass at L3 – 1 A level
Business - BTEC Level 3	Edexcel	Maths 5, English 5	5 GCSEs at grade 5 or above	2 A Levels
ICT - Cambridge Technical Introductory Diploma	OCR	Maths 5, English 5	GCSE 6 ICT or Cambridge Nationals Merit	1 A Level
Music (Practitioners) - RSL Subsidiary Diploma	RSL	Maths 5, English 5	GCSE 6 Music or an audition	1.5 A Levels
Performing Arts - BTEC National Extended Certificate	Edexcel	Maths 5, English 6	GCSE 6 English Language preferred plus an audition	1 A Level
Sport BTEC Extended Certificate	Pearson	Maths 5, English 5	GCSE 6 PE or BTEC PE L2 Distinction	1 A Level
Sport BTEC National Diploma	Pearson	Maths 5, English 5	GCSE 6 PE or BTEC PE L2 Distinction	2 A Levels

COURSE INDEX

A LEVEL COURSES

13/14 ART, CRAFT & DESIGN
BIOLOGY

15/16 BUSINESS STUDIES
CHEMISTRY
COMPUTER SCIENCE
DESIGN & TECHNOLOGY / PRODUCT DESIGN

17/18 DRAMA & THEATRE STUDIES

19/20 ECONOMICS
ENGLISH LITERATURE
ENVIRONMENTAL SCIENCE

21/22 FRENCH
GEOGRAPHY
HISTORY

23/24 LAW
MATHEMATICS
MATHS - FURTHER

25/26 MEDIA STUDIES
PHOTOGRAPHY
PSYCHOLOGY
PHYSICS

27/28 RELIGIOUS STUDIES & ETHICS
SPANISH

VOCATIONAL COURSES

31/32 BEAUTY THERAPY
BUSINESS

33/34 INFORMATION TECHNOLOGY

35/36 MUSIC
PERFORMING ARTS

37/38 SPORT

11

CHALFONTS.ORG • 01753 882032 • INFO@CHALFONTS.ORG



12

A LEVEL COURSES

A Level Art is a dynamic subject which is constantly evolving. Art skills are transferable to other studies. My art teacher inspired me to continue creating and to immerse myself in my artwork. I have found my own style and I am developing my own skills.

Alice Clark - studying Creative Writing at Reading University

ART - FINE ART

A LEVEL

EXAM BOARD Edexcel
COURSE CODE 9ADO

ENTRY REQUIREMENTS

You will need five 9-5 grades at GCSE (including English Language) and at least a grade 6 in Art/ Digital Art or a strongly related subject. A Level Fine Art requires a great deal of creativity, thought, time, independent learning and passion.

ASSESSMENT

At the end of Year 13: externally set examination (15 hours) plus a portfolio of practical and written development work = 40% of the total qualification. Personal Investigation = 60% of the total qualification. This is internally set, assessed by the teacher and externally moderated. There are major elements: practical work; supporting studies (a portfolio of development work and outcomes based on themes and ideas).

COURSE LEADER

Mr Daniel West
01753 881713 • danielwest@chalfonts.org

WHY SHOULD I CHOOSE THIS COURSE?

Art requires engagement with aesthetic and intellectual concepts through the use of traditional and/or digital media, materials, techniques and processes. Art can be used to communicate ideas and messages about the world around us, the qualities of materials, perceptions or preconceptions. It can also be used to explore personal and cultural identity, society, how we live, visual language and technology, as well as allowing us to consider and reflect on our place in the world; both as individuals and collectively.

Students should use a variety of tools, materials and techniques as appropriate for recording their surroundings and source materials. They should consider the application and implications of new and emerging technologies which can be used in conjunction with traditional and digital Art materials.

WHERE WILL IT LEAD?

If you are interested in a career in any of the creative industries: fine art, architecture, computer gaming, graphic design, fashion, textile design and interior design then this course is essential as it provides the necessary stepping stone on to a one year Foundation Course, university or employment.

BIOLOGY

A LEVEL

EXAM BOARD AQA
COURSE CODE 7401/7402

ENTRY REQUIREMENTS

You will need five 9-5 grades at GCSE (including English Language). You will also need a grade 6 in Maths and a grade 6 in Triple Science or a 6/6 in Combined Science.

ASSESSMENT

Exam (100%) at end of Year 13 (3 x 2hr papers). Practical skills assessment

COURSE LEADER

Mr Ian Cartwright
01753 881652 • iancartwright@chalfonts.org

WHY SHOULD I CHOOSE THIS COURSE?

Biology is the science of life. You will learn about how cells function and the biochemistry that takes place. You will study a variety of living things, particularly yourself and how other living things function to stay alive.

WHAT WILL I DO ON THIS COURSE?

The course is split into 8 topics: Practical skills are integrated with the theoretical topics and there is a greater emphasis on practical work as a means to develop understanding of key concepts, and to improve laboratory skills.

- Biological molecules
- Cells
- Organisms exchanging substances with their environment
- Genetic information, variation and relationships between organisms
- Energy transfers both in and between organisms
- Organisms responding to changes in their internal and external environments
- Genetics, populations, evolution and ecosystems
- The control of gene expression

WHERE WILL IT LEAD?

A view into the incredible variety of organisms that inhabit our planet; what lies ahead for the future of genetic engineering and much, much more. An A Level in Biology is a key to unlocking many doors, particularly university with courses such as Medicine, Veterinary courses and Forensic Science.

BUSINESS STUDIES

A LEVEL

EXAM BOARD	COURSE CODE
Edexcel	9BS0

ENTRY REQUIREMENTS

You will need five 9-5 grades at GCSE, Grade 6 or above in GCSE Business Studies (if studied), plus a Grade 6 or above in both Maths and English Language. Students can take the course if they have not done GCSE Business Studies but must meet the above requirements in Maths and English Language.

ASSESSMENT

Exam (100%) at end of Year 13 (3 x 2hr papers).

COURSE LEADER

Mrs Louise Flisher
01753 881715 • louiseffisher@chalfonts.org

WHY SHOULD I CHOOSE THIS COURSE?

Over the two years you will be given the opportunity to study a variety of topics such as organisations and the markets they serve, as well as aspects of global business and starting a business.

WHAT WILL I DO ON THIS COURSE?

The course will be structured over four themes; two of these will be studied in the first year:

- Theme 1 - Marketing and People
- Theme 2 - Managing Business Activities
- Theme 3 - Business Decisions and Strategy
- Theme 4 - Global Business

Themes 1 and 2 provide the grounding to move on to Themes 3 and 4 in the second year, which requires students to take a more strategic view of business opportunities and issues

WHERE WILL IT LEAD?

The topics and specifications aim to equip students for higher education, where they may study subjects including accounting, business management, banking and finance. The course would also be useful to equip students with valuable knowledge for a career in any area of business.

CHEMISTRY

A LEVEL

EXAM BOARD	COURSE CODE
OCR	H432

ENTRY REQUIREMENTS

You will need five 9-5 grades at GCSE (including Maths and English Language). You will also need a grade 6 in Maths and either 6 in Triple Science or a grade 6/6 in Combined Science.

ASSESSMENT

- Exam (100%) at end of Year 13 (3 x 2hr papers).
- At least 15% of the question papers cover knowledge and understanding of practical work
 - 20% of the question papers cover mathematical skills
 - Practical Endorsement doesn't count towards the A Level but is reported alongside it

COURSE LEADER

Mr Ian Cartwright
01753 881672 • iancartwright@chalfonts.org

WHY SHOULD I CHOOSE THIS COURSE?

The A Level course covers the key concepts of chemistry. Practical skills are integrated with theoretical topics and there is a greater emphasis on practical work as a means to develop understanding of key concepts, and to improve laboratory skills. Students will develop their problem solving and investigative skills, as well as application of content in a broader range of contexts.

WHAT WILL I DO ON THIS COURSE?

The development of practical skills underpins the entire specification; they are assessed within written examinations, and within the practical endorsement. The first modules will build on topics covered at GCSE; including atoms, compounds, equations, moles and acid-base reactions. This will be developed further with learning about the periodic table, energy and core organic chemistry. The second year will cover concepts in physical chemistry, transition elements, organic chemistry and analysis.

WHERE WILL IT LEAD?

An A Level in Chemistry can contribute to various career paths and further education courses such as medicine and healthcare, dentistry, pharmaceuticals, chemical, mechanical and civil engineering and environmental science.

COMPUTER SCIENCE

A LEVEL

EXAM BOARD	COURSE CODE
OCR	H446

ENTRY REQUIREMENTS

A minimum grade of a 6 at GCSE Computing with a grade 6 in GCSE Maths. If you didn't study GCSE Computing, a minimum grade of an 7 in GCSE ICT and a grade 7 in GCSE Maths is required.

The type of person who will succeed on this course will be someone who has the ability to solve complex problems, think analytically, have an eye for detail and be able to use their own initiative.

ASSESSMENT

End of Year 13 (2 x 2.5hr papers).
Non-exam assessment (20% of A Level).

COURSE LEADER

Mr James Gaunt
01753 881738 • jamesgaunt@chalfonts.org

WHY SHOULD I CHOOSE THIS COURSE?

Advances in computing are transforming the way we work, live, learn and communicate. A Level Computer Science will give you the opportunity to develop your 'computational thinking', which is essential to ensure that you are ready for the new and ever changing digital world. The course is not about learning to use tools or just training in a programming language. Instead, the emphasis is on computational thinking. Computational thinking is a type of reasoning used by both humans and machines and is an important life skill. You will learn how to solve a variety of different problems, study logical disciplines to write and test programs, understand the management and organisation of computer systems and the effect of computer applications on both society and individuals.

WHAT WILL I DO ON THIS COURSE?

The characteristics of contemporary processors, input, output, storage devices, software and software development, exchanging data, data types, data structures and algorithms, legal, moral, cultural and ethical issues, computational thinking, problem solving and programming.

WHERE WILL IT LEAD?

The UK, indeed the entire world, is now wholly reliant on computers and both hardware and software is developing and changing all the time. As such, anyone with expertise in computers, the internet or information technology as a whole is able to use their skills and education to work in almost any sector.

DESIGN & TECH /PRODUCT DESIGN

A LEVEL

EXAM BOARD	COURSE CODE
AQA	7552

ENTRY REQUIREMENTS

You will need five 9-5 grades at GCSE (including Maths and English Language). You will also need to get at least a grade 6 in Design and Technology GCSE or a Distinction in EAL Engineering but, more importantly, you must have a keen interest in Design and Technology. You need to be imaginative, inventive and generally enjoy creating things.

ASSESSMENT

Technical principles exam paper
- 2 hrs 30 mins 30%
Designing and making principles
- 1 hr 30 mins 20%
Coursework - 50%

COURSE LEADER

Mr Darren Sewell
01753 882032 • darrensewell@chalfonts.org

WHY SHOULD I CHOOSE THIS COURSE?

This creative and thought provoking qualification gives students the practical skills, theoretical knowledge and confidence to succeed in a number of careers, especially the creative industries. They will investigate historical, social, cultural, environmental and economic influences on design and technology, whilst enjoying opportunities to put their learning into practice by producing prototypes of their choice. Students will gain a real understanding of what it means to be a designer, alongside the knowledge and skills sought by higher education and employers.

WHERE WILL IT LEAD?

If you are interested in a career in design then this course is essential and it will lead you directly on to related courses at university. It is also beneficial to students pursuing careers in Art & Design, Architecture, Product Design and Engineering, Interior Design, Furniture Design and Set Design in Theatre and Film.

DRAMA & THEATRE STUDIES

A LEVEL

EXAM BOARD Edexcel
COURSE CODE 9DR01

ENTRY REQUIREMENTS

You will need to be passionate about the Arts, and have an interest in acting and directing. You should have achieved at least a grade 6 in Drama at GCSE, as well as a grade 6 or above in GCSE English Language. If you are not taking GCSE Drama you can still take this course but please speak to us first for more information.

ASSESSMENT

Component 1: Devising (40%) - Internally assessed and written coursework.

Working with a group, you will devise an original piece of performance using an extract from a play and a theatre practitioner as a stimulus.

You will also be required to submit a written portfolio of evidence which could be a mixture of written and recorded work.

Component 2: Text in Performance (20%) - Externally assessed by a visiting examiner.

This will involve learning and performing one group piece and one monologue or duologue from a play.

Component 3: Theatre Makers in Practice (40%) - Externally assessed - a written paper lasting 2½ hours.

COURSE LEADER

Mrs Catherine Adams
01753 881634 • catherineadams@chalfonts.org

WHY SHOULD I CHOOSE THIS COURSE?

Drama A Level requires you to take on the role of Theatre Critic, Director and Actor analyzing how and why decisions are made throughout the creative process. You will attend theatre trips, take part in practical and theoretical workshops and private/public performances. A Level Drama is a huge success at The College; make sure you are part of the success.

WHERE WILL IT LEAD

Many universities recognise A Level Drama as an excellent foundation for further study at degree level in the arts. Auditioning for Drama and Performing Arts school is also an option for a number of our students. The course provides a brilliant platform for work in the performing arts, theatre, television, journalism and music professions.

I chose The Chalfonts due to the extremely hard working teachers, the amazing facilities and the diversity of the Drama course.

Lauren Gulliford-Brown - went onto study Theatre Arts at the University of Essex

ECONOMICS

A LEVEL

EXAM BOARD Edexcel
COURSE CODE 9ECO

ENTRY REQUIREMENTS

You will need five 9-5 grades at GCSE including grade 6 or above in Mathematics and a grade 6 in English Language.

ASSESSMENT

Exam (100%) at the end of year 13 (3 x 2hr papers).

COURSE LEADER

Mr Charlie Howard
01753 881715 • charliehoward@chalfonts.org

WHY SHOULD I CHOOSE THIS COURSE?

Economics is about studying the world around us from a social, financial and cultural perspective. The subject looks at all the different factors that affect wealth and well-being. Over the two years you will be given the opportunity to learn about how finances are processed over a range of different industries; how businesses ensure that they make a profit; and how economics can shape government policy. The main focus is applying economic concepts to real life and applying appropriate quantitative skills to a context. You will develop good analysis skills and will be able to pick out key information from statistics and text. You will learn how to use data to draw conclusions and make informed decisions.

Theme 1 – Introduction to markets and market failure
Theme 2 – The UK economy – performance and policies
Theme 3 – Business behaviour and the labour market
Theme 4 – A global perspective

The exams at the end of the second year consist of 3 papers:

Paper 1 Markets and Business behaviour. Assessing content from Themes 1 and 3 (microeconomics)
Paper 2 The national and global economy. Assessing content from Themes 2 and 4 (macroeconomics)
Paper 3 Microeconomics and macroeconomics. Synoptic paper.

WHERE WILL IT LEAD?

A level Economics provides the foundation for further study of business or economics related subjects in Higher Education i.e. banking or finance. Analysis and evaluation skills are highly sought after by employers and you'll be able to apply your acquired skills to real-life situations in business. The topics we study will be extremely useful for students intending to pursue careers in any area of business but specifically management consultancy, investment or risk analysis, accountancy, careers in politics/government.

ENGLISH LITERATURE

A LEVEL

EXAM BOARD AQA
COURSE CODE 7712A

ENTRY REQUIREMENTS

You will need five 9-5 grades at GCSE (with at least a grade 6 in English and English Literature). You should also have an interest in more general issues such as social and political affairs and enjoy reading in your leisure time.

ASSESSMENT

At end of Year 13, two written exams: 3hr/2.5 hours. One piece of coursework (externally set and marked): Comparative critical study of two texts, at least one of which must have been written pre-1900. One extended essay (2500 words) and a bibliography.

COURSE LEADER

Mrs Abigail Castleton
01753 881642 • abigailcastleton@chalfonts.org

WHY SHOULD I CHOOSE THIS COURSE?

This course will appeal to those who want to extend their writing skills and develop their understanding of literature. You will study Shakespeare's Othello and The Great Gatsby by F. Scott Fitzgerald, along with an anthology of poetry. You will also study a range of WW1 prose, 'Regeneration' by Pat Barker, The Wipers Times by Ian Hislop and Nick Newman and a collection of poetry written Wilfred Owen. The course will develop your thinking and communication skills and is a useful preparation for any career. It offers study of a wide range of literary texts from 1370 to the present day, and encourages the development of practical writing skills for a variety of purposes and audiences.

WHERE WILL IT LEAD?

A Level English Literature can be usefully combined with many other courses and so provides access to a variety of degree options. The course will also develop your thinking and communication skills and is a useful preparation for any career.

ENVIRONMENTAL SCIENCE

A LEVEL

EXAM BOARD AQA
COURSE CODE 7447

ENTRY REQUIREMENTS

You will need five 9-5 grades at GCSE (including Maths and English Language). You will also need either two grade 6s in Science subjects or Geography.

ASSESSMENT

There are seven modules in the specification which will be assessed by two written exams at the end of Year 13.

COURSE LEADER

Mr Ian Cartwright
01753 881672 • iancartwright@chalfonts.org

WHY SHOULD I CHOOSE THIS COURSE?

You will explore the key challenges facing our planet and how the environment supports us; how we threaten these support systems and strategies for a more sustainable lifestyle. Studying wildlife conservation, resource management, energy use, pollution and food production you will develop an in-depth understanding of the problems...and the solutions. The new specification covers many aspects of the world around us, including conservation methods, land use conflict, global climate change, pollution, energy resources, sustainable biological resources, evolution, biotechnology and ecosystems and population dynamics - it is a really good range of topics so that everyone will find areas that interest them!

This subject is for you if you: have a real interest in the environment and its sustainable management; enjoy science and want to apply your understanding to real-world contexts; want to develop your skills in researching and evaluating information and analysing data; like debate and problem solving. You are most likely to succeed if you are a self-motivated, independent learner. Lessons are interactive and build upon independent study. You should be willing to participate in topical discussions and debates, be able to structure well-balanced arguments in essay-style questions and use data from different sources to analyse results.

WHERE WILL IT LEAD?

Your interest in the environment and ethical issues could lead you into a diverse world of careers. Possible related sectors to study further include ecology and wildlife conservation, environmental science, agriculture, geography, zoology, marine biology, biotechnology, animal science, sustainable civil engineering, journalism or urban landscape design. Environmental experts are needed in business, industry and government as well as estate and country management and conservation.



FRENCH

A LEVEL

EXAM BOARD	COURSE CODE
Edexcel	8FR0

ENTRY REQUIREMENTS

You will need five 9-5 grades at GCSE (including Maths and English Language). You will also need a grade 7 or above at GCSE in French. Most importantly, you need a real interest in French and in the countries where French is spoken.

ASSESSMENT

Exam (100%) at end of Year 13 (2 x written exams, 1 practical discussion).

Before the practical exam you will have 5 minutes to prepare a discussion based on a stimulus card. You will then discuss that topic with your examiner. You will also give a presentation on an independent research project of your choice.

COURSE LEADER

Mr Tristan Quéré
01753 881778 • tristanquere@chalfonts.org

WHY SHOULD I CHOOSE THIS COURSE?

If you enjoy meeting and talking to people from other countries, finding out about their cultures and learning about how language works then studying A Level French is an excellent choice for you! You will learn about different aspects of French culture, literature and/or film, and be able to use more complex grammar and vocabulary. Topics: evolving society in France; political and artistic culture in French-speaking countries; immigration and multiculturalism in France; the Occupation and Resistance. The books/film you study may link to the topics, giving you further insight into French culture.

WHERE WILL IT LEAD?

Many of our students go on to study languages as a major or minor part of their Higher Education course. There has been an explosion in recent years in the number of university courses where Modern Languages are combined with other subjects, such as business and management, marketing, accountancy, law, engineering, construction, sciences, IT, arts and music. Study at this level usually involves time spent working or studying abroad.

GEOGRAPHY

A LEVEL

EXAM BOARD	COURSE CODE
Edexcel	9GEO

ENTRY REQUIREMENTS

You will need five 9-5 grades at GCSE (including Maths and English Language). You will also need grade 6 or above in GCSE Geography. We highly recommend that you have achieved at least a grade 6 in both Maths and English at GCSE to enable you to be successful in this A Level.

ASSESSMENT

At the end of Year 13, (3 x 2hr 15min written papers).
Coursework: Independent Investigation (20% of the qualification). A 3000-4000 word report based on a minimum of 4 days of compulsory fieldwork. This will be based on a question or issue defined and developed by you personally. Support will be provided to guide you in both the fieldwork and the write up.

COURSE LEADER

Mr Barry Keane
01753 881662 • barrykeane@chalfonts.org

WHY SHOULD I CHOOSE THIS COURSE?

Geography is a modern and evolving subject that explores the challenges and issues facing the world today. Throughout the course, you will develop a curiosity and fascination about the world and its people. You will evaluate contemporary geographical issues such as the causes of globalisation, responses to tectonic hazards, water insecurity and climate change, and the reasons for shifting economic and political power. You will develop fieldwork and independent research skills; invaluable skills to your future study and career.

WHERE WILL IT LEAD?

Geographers look at modern day issues from a wide perspective and develop a range of skills which are attractive to a very broad range of future employers. Geography will enable you to develop a variety of transferable skills such as ICT, numeracy, literacy and creative thinking. Just some of the career options that are open to you: Utilities Manager, Aid Worker, Diplomat, Charity Coordinator, Coastal Manager, Geologist, Civil Engineer, Soil Conservationist, Town Planner, Market Researcher, Housing Officer, Estate Agent, Disaster Manager.

HISTORY

A LEVEL

EXAM BOARD	COURSE CODE
AQA	7042JP

ENTRY REQUIREMENTS

You will need five 9-5 grades at GCSE (including Maths and English Language). You will also need a grade 6 or above in History at GCSE.

ASSESSMENT

At the end of Year 13 (2 x written exams and complete an Historical Investigation).

COURSE LEADER

Mr Nick Taylor
01753 881660 • nicholastaylor@chalfonts.org

WHY SHOULD I CHOOSE THIS COURSE?

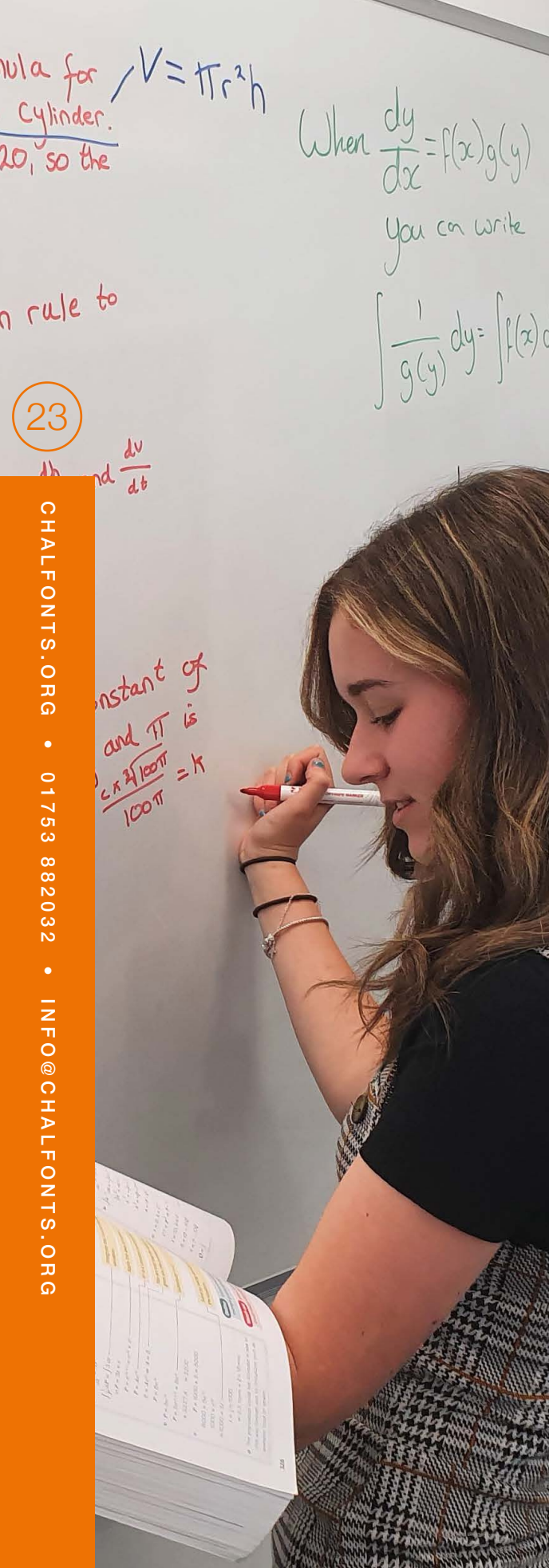
To study the GCE A Level in History you need an interest in the world around you, an enquiring mind and the ability to weigh up different evidence or arguments. The GCE builds upon the skills developed during your GCSE, such as the communication of historical knowledge and the ability to analyse historical sources. Periods studied are: The British Empire 1857-1914 and The Transformation of China 1936-1997. You will also complete a personal study from a range of topics such as: The importance of the Lancastrians, Yorkists and Henry II; Rebellion under the Tudors; Stuart Britain and the Crisis of the Monarchy; Tsarist Russia or the Birth of the USA.

You will also be expected to put in a considerable amount of work in your own study time (six hours per week approximately) and you will be expected to work to strict deadlines. The need to read widely outside the classroom is the key to success at A Level.

WHERE WILL IT LEAD?

At university you can study History, or related degrees such as Law, Politics, English Literature, Economics and Geography. You will gain a number of skills relevant to many different types of employment, such as the ability to seek information and to analyse it in order to identify facts and motives and to present this information to others. These are skills which are used in journalism, national/local government and the civil service, as well as those directly related to history such as heritage sites, museums and record offices.





23

CHALFONTS.ORG • 01753 882032 • INFO@CHALFONTS.ORG

LAW

A LEVEL

EXAM BOARD	COURSE CODE
AQA	7162

ENTRY REQUIREMENTS
You will need five grades 9-5 at GCSE, grade 6 or above in English Language and 6 or above in a Humanities subject.

ASSESSMENT
Exam (100%) at the end of year 13 (3 x 2hr papers).

COURSE LEADER
Mrs Saranjit Aujla
01753 881715 • saranjitaujla@chalfonts.org

WHY SHOULD I CHOOSE THIS COURSE?
A Level Law develops knowledge and understanding of the English legal system. The study of Law at A Level enables students to develop their analytical and critical thinking skills. Studying Law develops students' problem-solving skills through the application of legal rules, together with an understanding of legal method and reasoning. These skills provide excellent preparation for those students who wish to progress to degree level study, or pursue a wide range of careers. The A Level Law specification is designed to encourage and engage students to sustain their interest and enjoyment in law.

- Paper 1 - The nature of law, the English legal system and criminal law
- Paper 2 - The nature of law, the English legal system and Tort
- Paper 3 - The nature of law, the English legal system and law of contract or human rights

WHERE WILL IT LEAD?
A Level Law gives an excellent introduction to students who wish to study Law at university, or start a legal apprenticeship. It is well suited for students who wish to pursue a career in politics, journalism or marketing. It is a well respected course and links well with science subjects, humanities and the social sciences.

MATHEMATICS

A LEVEL

EXAM BOARD	COURSE CODE
Edexcel	9371

ENTRY REQUIREMENTS
You will need five 9-5 grades at GCSE (including English Language). To study A Level Mathematics you will need a grade 7 at GCSE. Most importantly, you must be very comfortable with the algebra element of the GCSE course. You need to enjoy solving abstract algebraic and numerical problems to a high level. A substantial amount of commitment is required to be successful with the A Level Mathematics course. This will include a minimum of 6 hours a week independent study time.

ASSESSMENT
At the end of Year 13 you will sit 3 equally weighted exams.

- Paper 1: Pure Mathematics 1 & 2
- Paper 2: Pure Mathematics 1 & 2
- Paper 3: Statistics and Mechanics

You will have formative assessments throughout the course on a variety of topics.

COURSE LEADER
Miss Ola Osibona
01753 881738 • olaosibona@chalfonts.org

WHY SHOULD I CHOOSE THIS COURSE?
Mathematics lends itself to any field and can enhance career prospects and earning capacity. For those intending to continue on to university, Mathematics has a very strong appeal to universities as well as future employers. The Mathematics course will enable you to develop a wide range of skills, and can help you develop a deeper understanding into other A Level courses. The applied parts of the course give a real insight into statistical analysis as well as delving into the world of mechanics, where you can learn and understand what impact gravity has in different situations.

WHERE WILL IT LEAD?
University is an obvious choice but not necessarily studying Mathematics itself. There are a huge range of Higher Education courses and other careers in which Mathematics plays a vital part. Graduates typically enter traditionally Mathematical professions and become actuaries, statisticians, teachers or lecturers. Others go into areas requiring logical thought and problem-solving abilities, such as IT, accountancy, banking or finance. Graduates have entered fields as diverse as merchant banking, the RAF, formula one racing design and technical publishing.

FURTHER MATHEMATICS

A LEVEL

EXAM BOARD	COURSE CODE
Edexcel	9371

ENTRY REQUIREMENTS
You will need five 9-5 grades at GCSE (including English Language). To study A Level Further Mathematics you will need a grade 8 at GCSE. You need to have a real passion for solving analytical problems and developing these skills throughout the course. You must enjoy solving problems and working with complex algebraic techniques. A substantial amount of commitment is required to be successful with the A Level Further Mathematics course. This will include a minimum of 6 hours independent study per week.

ASSESSMENT
At the end of Year 13, you will sit 4 equally weighted exams.

- Paper 1: Core Pure Mathematics 1 & 2
- Paper 2: Core Pure Mathematics 1 & 2
- Paper 3: Further Mathematics 1
- Paper 4: Decision Mathematics 1

You will have formative assessments throughout the course on a variety of topics.

COURSE LEADER
Miss Ola Osibona
01753 881738 • olaosibona@chalfonts.org

WHY SHOULD I CHOOSE THIS COURSE?
For students who would like to maximise the level of Mathematics studied in the 6th Form, the opportunity to study Further Mathematics is one that should be of great appeal. Further Mathematics is a challenging and enjoyable option for those who enjoy gaining a deeper understanding into Mathematical concepts and processes. You will have the opportunity to study Pure Mathematics to a very deep level. In addition to this, you will study Decision Mathematics which is the study of algorithms and programming; this has close links with Computer Science. This course is highly respected by universities and future employers and it enables students to distinguish themselves as very able mathematicians and problem solvers in their applications for both university and future employment.

WHERE WILL IT LEAD?
Students who wish to pursue degree subjects such as Science, Engineering, Mathematics and Economics will be placed at a huge advantage over other candidates. Further Mathematics gives you the skills to find solutions to the most complex of problems. Universities regard Further Mathematics as one of the most challenging A Levels. It is vital for anyone wishing to study a Maths degree, as well as giving an excellent grounding for other subjects such as Physics, Chemistry or Computer Science.

24

A LEVEL COURSES

MEDIA STUDIES PHOTOGRAPHY

A LEVEL

EXAM BOARD **COURSE CODE**
EDUQAS 603/1149/6

ENTRY REQUIREMENTS

You will need five 9-5 grades at GCSE (including Maths and English Language grade 9-5). You must have at least a grade 6 in GCSE Media Studies, or a grade 6 or above in GCSE English Language.

ASSESSMENT

At the end of Year 13 you will sit 2 written exams and submit one assessment coursework piece.

COURSE LEADER

Miss Katy Piggott
01753 881784 • katypiggott@chalfonts.org

WHY SHOULD I CHOOSE THIS COURSE?

The A Level in Media Studies is a challenging course. You will be taught the key concepts and theory that underpin this subject, enabling you to deconstruct, decode and create a media text. There will be both a historical and contemporary aspect to this course considering the role and impact of the media on society, culture, politics and the economy in both domestic and global spheres.

You will be expected to undertake at least 5 hours private study per week and a large amount of reading should be expected. In addition, it is worth noting that this is a subject in which essays/analysis is the dominant form of assessment.

WHERE WILL IT LEAD?

This course will help you to appreciate how media industries operate, how audiences are targeted and understand how media texts are created. You will also have the opportunity to develop practical skills in a number of media based programs such as Photoshop, Premiere and After Effects.

Students who have been successful at A Level Media Studies have gone on to study Film, TV Production, Journalism, Broadcasting, Media Studies, Design and E-Media courses.

A LEVEL

EXAM BOARD **COURSE CODE**
Edexcel 9PY0

ENTRY REQUIREMENTS

You will need five 9-5 grades at GCSE (including Maths and English Language) and at least a grade 6 in Art/Digital Art or a strongly related subject. Photography A Level requires a great deal of creativity, thought, time, independent learning and passion.

ASSESSMENT

At the end of Year 13 you will be assessed on two elements: an externally set exam – 15 hours -under examination conditions, and an internally marked coursework project which, as well as showing practical and creative skills, includes critical written communication showing contextual research and understanding in a minimum 1000 words of continuous prose; this may contain integrated images.

COURSE LEADER

Mr Daniel West
01753 881713 • danielwest@chalfonts.org

WHY SHOULD I CHOOSE THIS COURSE?

Photography is a lens and light-based media course which includes work in film, video, digital imaging and light-sensitive materials. Research and development will be based around traditional art techniques and artist understanding, as well as that of photography. You will be guided through artistic/photographic themes and projects which will help you to demonstrate your skills in photography, digital manipulation and other lens-based media. Photography students will engage in a wide range of techniques and processes used to convey messages such as those related to animation, video, light projections, portraiture or social and documentary photography.

Students are encouraged to obtain their own DSLR camera to support their learning and understanding in this subject.

WHERE WILL IT LEAD?

If you are interested in a career in any of the creative industries i.e. fine art, architecture, graphic design, computer gaming, fashion and textile design and interior design then this course is essential as it provides the necessary stepping stone to a one year foundation course, or employment.

PSYCHOLOGY

A LEVEL

EXAM BOARD **COURSE CODE**
AQA 7182

ENTRY REQUIREMENTS

You will need five 9-5 grades at GCSE (including Maths and English Language) and grade 6 in two of the Triple Sciences or 6/6 in the double award.

ASSESSMENT

At the end of Year 13 (3 x 2 hour external exams).

COURSE LEADER

Mr Martyn Way
01753 881614 • martynway@chalfonts.org

WHY SHOULD I CHOOSE THIS COURSE?

Some people believe that Psychology is the same as Psychiatry, or that it is just common sense; nothing could be further from the truth. In short, Psychology is the scientific study of the mind and behaviour i.e. why do we behave the way that we do? If you would like the answers to some of these questions, and raise a whole new set of questions about human behaviour, this is the course for you.

On this fascinating course you will study many different areas of psychology including; memory, conformity and obedience, caregiver attachment, psychopathology, the structure and function of the brain, relationships, aggression and schizophrenia. You will also learn about different research methods and explore the big issues and debates in Psychology.

WHERE WILL IT LEAD?

Students who study A Level Psychology often go on to study the subject at university, or take a degree course in related areas such as teaching, law, business, health care or advertising. It would also be a useful qualification when applying to areas such as human resource management, social care and the criminal justice system.

PHYSICS

A LEVEL

EXAM BOARD **COURSE CODE**
AQA 7407/7408

ENTRY REQUIREMENTS

You will need five 9-5 grades at GCSE (including Maths and English Language). You will also need a grade 6 in Maths and a grade 6 in Triple Science or a grade 6/6 in Combined Science. You should also seriously consider taking A Level Mathematics to compliment Physics at A Level. Having an inquiring mind and a desire to find out what makes the physical world tick would also be a great advantage.

ASSESSMENT

At the end of Year 13 (3 x 2 hour exams). There is also an internally set practical assessment and it is based on experiments throughout the year. This is reported alongside your GCE A Level Grade, however it does not count towards your final grade.

COURSE LEADER

Mr Ian Cartwright
01753 881600 • iancartwright@chalfonts.org

WHY SHOULD I CHOOSE THIS COURSE?

It is an exciting and stimulating course which focuses on the real life applications of Physics, as well as some of the modern advances in science today. If you have ever thought, questioned or wondered about why and how things work then Physics is for you! Topics covered are: Measurements, Particles, Waves, Mechanics, Fields and their consequences, Electricity, Fields & Nuclear Physics.

WHERE WILL IT LEAD?

An A Level in Physics will always look good on your CV! Physics teaches you a range of scientific, logical and analytical skills so you could study a range of subjects at university including Astronomy, Biophysics, Engineering, Oceanography, Geology, Business, Law and Finance. If you choose not to go to university, an A Level in Physics will be seen as a valuable qualification to all employers.

RELIGIOUS STUDIES & ETHICS

A LEVEL

EXAM BOARD **COURSE CODE**
AQA 7062

ENTRY REQUIREMENTS

You will need five 9-5 grades at GCSE (including Maths and English Language). You will also need a grade 6 or above in RE at GCSE. If you did not study RE at GCSE you will need a grade 6 or above in English Language.

ASSESSMENT

At the end of Year 13 you will sit 2 x 2hr exam papers

COURSE LEADER

Ms Sarah Jones
01753 881674 • sarahjones@chalfonts.org

WHY SHOULD I CHOOSE THIS COURSE?

The topics we cover are both interesting and thought-provoking, including evil and suffering, religious experience, religious language, miracles, the self and life after death.

As an A level RE student you will be given the opportunity to study religious events in depth, and through research and discussion, articulate your own ethical standpoint and reach measured conclusions. Successful students in this subject gain lifelong skills including: assessing different interpretations of an argument, formulating their own ideas about a subject, presenting clear and logical arguments, evaluating historical evidence and developing an understanding of religious concepts.

WHERE WILL IT LEAD?

With its debate, exploration of ethical issues and investigation into belief, this subject provides an ideal platform for many courses at degree level. The skills gained from the study of this subject are highly desirable in careers such as law, medicine, business, finance, accountancy, tourism, town planning, politics, journalism and research to name but a few.

SPANISH

A LEVEL

EXAM BOARD **COURSE CODE**
Edexcel 9SP0

ENTRY REQUIREMENTS

You will need five 9-5 grades at GCSE (including Maths and English Language). You will also need a grade 7 or above at GCSE in Spanish. Most importantly, you need a real interest in Spanish and in the countries where Spanish is spoken.

ASSESSMENT

Exam (100%) at end of Year 13 (2 x written exams, 1 practical discussion).

Before the practical exam you will have 5 minutes to prepare a discussion based on a stimulus card. You will then discuss that topic with your examiner. You will also give a presentation on an independent research project of your choice.

COURSE LEADER

Mr Tristan Quéré
01753 881778 • tristanquere@chalfonts.org

WHY SHOULD I CHOOSE THIS COURSE?

If you enjoy meeting and talking to people from other countries, finding out about their cultures and learning about how language works then studying A Level Spanish is an excellent choice for you! You will learn many skills which are useful in a wide range of careers, such as the ability to communicate clearly, be confident about speaking in public, use problem-solving strategies and write coherently. You will learn about different aspects of Spanish culture, literature and/or film, and be able to use more complex grammar and vocabulary. Topics: evolving society in Spain; political and artistic culture in Spanish-speaking countries; immigration and multiculturalism in Spain; Franco's dictatorship and the transition to democracy. The books/film you study may link to the topics, giving you further insight into Spanish culture.

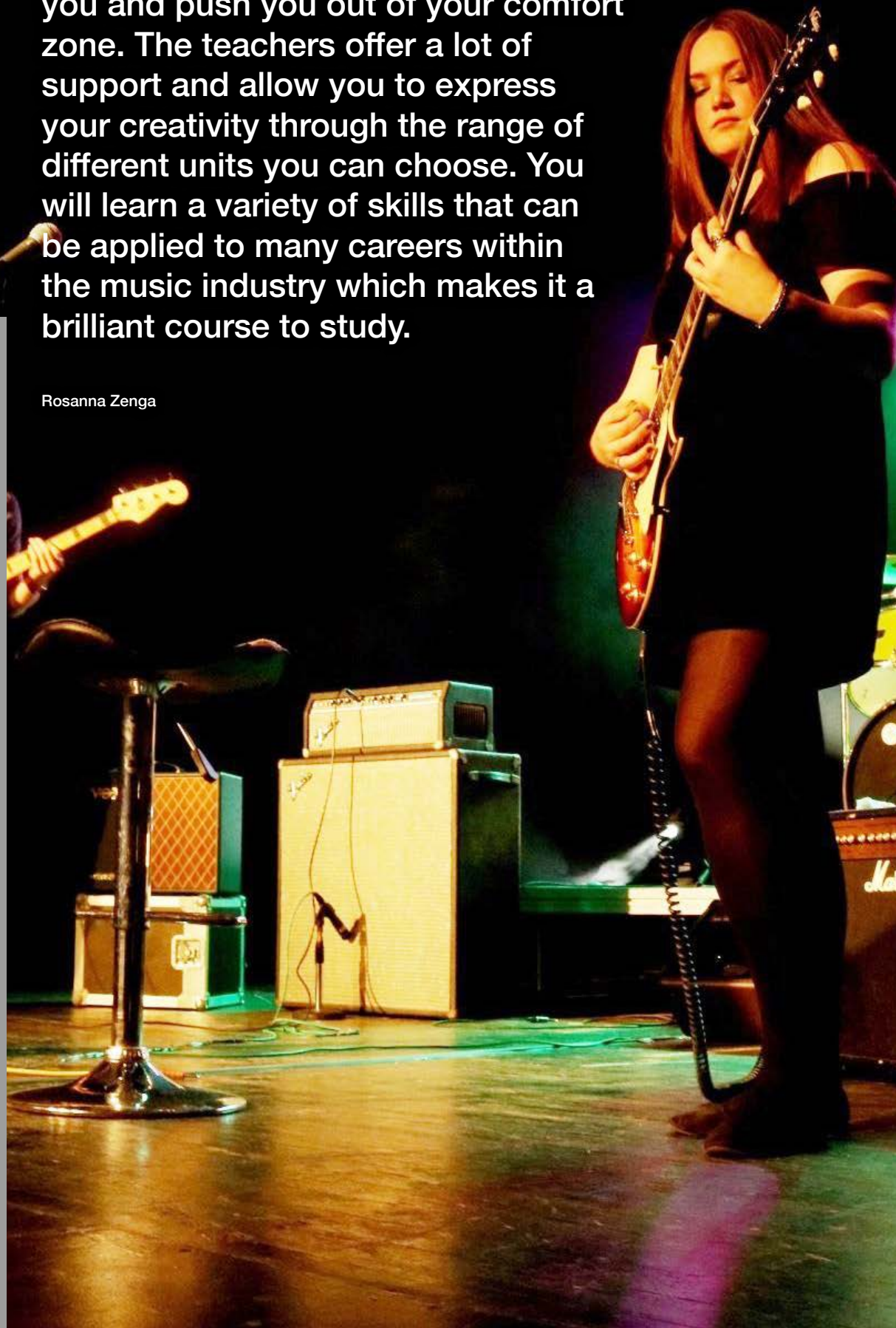
WHERE WILL IT LEAD?

Success at A Level Spanish means that you will add an extra international dimension to your personal skills profile, which will impress people who read your CV and put you in a stronger position to obtain a job in a company with international links.



Music at The Chalfonts will challenge you and push you out of your comfort zone. The teachers offer a lot of support and allow you to express your creativity through the range of different units you can choose. You will learn a variety of skills that can be applied to many careers within the music industry which makes it a brilliant course to study.

Rosanna Zenga



30

VOCATIONAL COURSES

29

I have always wanted a career in beauty therapy so getting the best training at the right college was essential. After research and recommendations from people in the industry I came across the Karma Academy. The training I received has been invaluable. The staff are very supportive and offer a wide range of training and career advice and it has been a pleasure to be a student at the Karma Academy.

Jessica Lee-Dodd - Ex-Beauty Therapy student



BEAUTY THERAPY

NVQ LEVEL 2/3

EXAM BOARD	COURSE CODE
VTCT	NVQ L2: AB20026 NVQ L3: AB30031

ENTRY REQUIREMENTS

You will need to achieve at least 5 GCSEs at grade 4 and above, provide a letter of application and pass an interview. You will be expected to provide your own beauty kit and make-up, together with KARMA salon dress and footwear, all of which is available through the Academy.

ASSESSMENT

Each unit is assessed by a combination of online exam, practical observation, written work and supplementary questions. Students must achieve a Level 2 before progressing to Level 3.

COURSE LEADER

Mrs Karen Rayner
01753 881709 • karenrayner@chalfonts.org

WHY SHOULD I CHOOSE THIS COURSE?

Students benefit from private beauty training as part of the Karma Academy based at the college. We provide the highest quality training which is carried out in a purpose built salon with industry experienced tutors using prestigious brands. Students will be expected to have a one day a week placement.

During Year 1 you will learn about facial skin care, manicure/ pedicure services, waxing, and eyebrow and eyelash treatments. You will also learn about health and safety, salon reception, promoting additional services and products and developing your personal effectiveness.

During Year 2 you will learn more about safety at work, promotional activities, electrical facial treatments, body massage, Indian head massage, aromatherapy massage and stone therapy treatments.

WHERE WILL IT LEAD?

Students successfully completing this course will find themselves very employable in salons, spas or employment abroad, as the qualification is internationally recognised. They can also set up their own business or progress to higher education.

BUSINESS

BTEC LEVEL 3

EXAM BOARD	COURSE CODE
Edexcel	720 GLH

ENTRY REQUIREMENTS

You will need five 9-5 grades at GCSE (including Maths and English Language). Good organisational skills and the ability to meet deadlines are vitally important to be successful on this course.

ASSESSMENT

1 written exam in Year 12 and one computer based exam in Year 12.
1 computer based exam and five internally assessed units in Year 13.

COURSE LEADER

Mrs Saranjit Aujla
01753 881715 • saranjitaujla@chalfonts.org

WHY SHOULD I CHOOSE THIS COURSE?

Over the two years you will be given the opportunity to study the world of business in depth. This course gives you a well-rounded choice of topics and an overall understanding of the key ingredients of running a business, as well as aspects that affect businesses and enterprises. Mandatory units of study are:

1. Exploring business
2. Developing a marketing campaign
3. Personal & business finance
4. Managing an event
5. International business
6. Principles of management

Optional units:

- Recruitment and selection
- Investigating Customer Service

WHERE WILL IT LEAD?

You will learn real, practical skills for the business world. These include making presentations, completing group tasks, interpreting financial data, producing business documents and responding to tough business decisions. You will also learn the academic skills necessary for university success.

This course is equivalent to 2 A Levels and could allow for entry to higher education or a higher apprenticeship. Nearly 1 in 4 students getting into university are doing so after studying BTECs. And employers love the practical skills you can build with a BTEC too.

INFORMATION TECHNOLOGY

LEVEL 3 CAMBRIDGE TECHNICAL INTRODUCTORY DIPLOMA

EXAM BOARD

OCR

ENTRY REQUIREMENTS

You will need five 9-5 grades at GCSE (including Maths and English Language). You should have a minimum of a grade 6 at GCSE ICT or the equivalent e.g. a Merit on Cambridge Nationals.

ASSESSMENT

Two units will be a written exam which will be externally assessed and the remaining three units will be practical coursework, which will be assessed in centre and externally moderated. You will be graded as Pass / Merit / Distinction / Distinction*, worth between 40 and 140 UCAS points.

COURSE LEADER

Mr James Gaunt
01753 881738 • jamesgaunt@chalfonts.org

WHY SHOULD I CHOOSE THIS COURSE?

The Cambridge Technical qualification is designed in collaboration with experts spanning the breadth of the sector and focuses on the skills, knowledge and understanding that today's universities and employers demand. Over the two years you will complete five units: Fundamentals of IT, Global Information, Virtual and augmented reality, Social media and digital marketing and Project management.

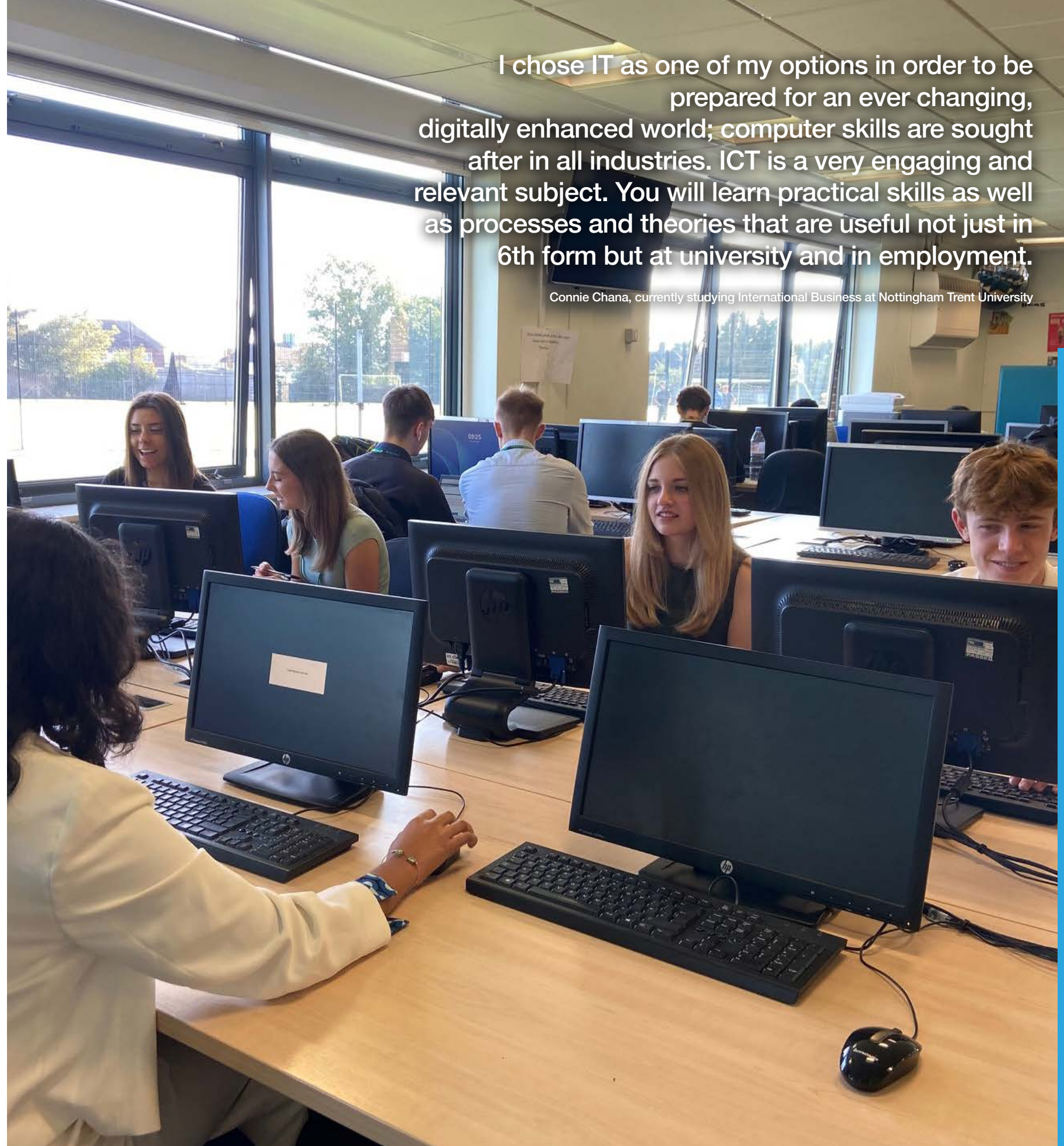
The qualification is aimed at students who want to study in a more practical, work-related way. This qualification is particularly attractive because of its real-world relevance and close alignment with industry practice, allowing students to achieve a real understanding of ICT that is a true fit with the needs of the workplace. The type of person who will succeed on this course will be well organised, able to provide consistent effort, be good at meeting deadlines and have a desire to improve.

WHERE WILL IT LEAD?

The course is aimed at those who want a career in IT. Typical job roles include: Junior digital content developer, 3D graphics technician, Virtual Reality software technician, Software developer, Digital identity planners, Digital content developer, Business and Marketing, Online Marketing and Project Management. The course will also compliment other disciplines ranging from business, art, media and design technology.

I chose IT as one of my options in order to be prepared for an ever changing, digitally enhanced world; computer skills are sought after in all industries. ICT is a very engaging and relevant subject. You will learn practical skills as well as processes and theories that are useful not just in 6th form but at university and in employment.

Connie Chana, currently studying International Business at Nottingham Trent University



MUSIC

SUBSIDIARY DIPLOMA FOR MUSIC PRACTITIONERS LEVEL 3

EXAM BOARD

RSL

ENTRY REQUIREMENTS

You will need five 9-5 grades at GCSE (including Maths and English Language). You will also need a grade 6 in GCSE Music or an audition with the music department.

ASSESSMENT

There are six units in this course. Four units involve live performance skills throughout as students learn the art of stagecraft, leading performances and live performing. Session Music involves learning to perform across a range of musical styles and working in a recording studio. Students also take one of several options to suit their interest from a large range of units, such as recording techniques, mixing and production engineering, live event management, music and dance choreography, composing for films or composing for a solo album. There are two Core units. Planning for a Career in the Music Industry involves written research into pathways into the music industry and further education. The final exam Core unit is a 10 week project to log, perform and evaluate a public performance. This final unit is externally marked by the RSL exam board and is equal to a third of the course in mark weighting.

COURSE LEADER

Mr Mark Swindell
01753 881665 • markswindell@chalfonts.org

WHY SHOULD I CHOOSE THIS COURSE?

The RSL Subsidiary Diploma offers you the chance to study a vocational course recognised by the music industry, colleges and universities. During the course you will be expected to put on, engineer and perform in at least 3 gigs per term, including 2 lunchtime gigs and one full evening gig. You will also be expected to take part in various work experience sessions based on music industry areas. You may like to study performing techniques, developing your skills to a higher standard and put on gigs to record your progress. You can also study sound engineering, live sound and music technology units. The course can be used as a launchpad for a musical career, lead to further study in your chosen specialism, or simply be a chance to follow a purely practical course to compliment your other A Levels.

WHERE WILL IT LEAD?

This is an industry based course equivalent to 1.5 A Levels. Students have gone on to study a whole range of music degrees including Vocal and instrumental degrees, sound production and engineering, commercial music, contemporary music and diplomas at the ACM and BIMM. Many of our alumni are now working full time in the music industry as engineers, producers, instrumental teachers and session musicians, music, sound engineering and music technology.



PERFORMING ARTS

BTEC LEVEL 3 NATIONAL EXTENDED CERTIFICATE

EXAM BOARD

Edexcel

ENTRY REQUIREMENTS

You will need five 9-5 grades at GCSE (including Maths and English Language). You will have at least a grade 5 in English Language.

ASSESSMENT

This qualification contains 4 units - three practical based units (1 externally marked) involving performing in two major performance projects. The final unit is a written controlled assessment lasting 3 hours. You will be able to prepare for the assessment on two practitioners and a theme.

COURSE LEADER

Mrs Catherine Adams
01753 881634 • catherineadams@chalfonts.org

WHY SHOULD I CHOOSE THIS COURSE?

This qualification is the equivalent to one A Level. You will learn about the work of professional performers and take part in workshops with professional actors, as well as attending a number of theatre trips. You will be encouraged to develop a range of skills and should be open to taking part in acting, singing, dancing and movement exercises. You do not have to be an expert in all of these but you must offer energy and enthusiasm. You will be expected to provide written portfolio evidence which reflects on your workshops and rehearsals. There will also be a considerable amount of written work and independent research to carry out. Be prepared to work hard and be organised.

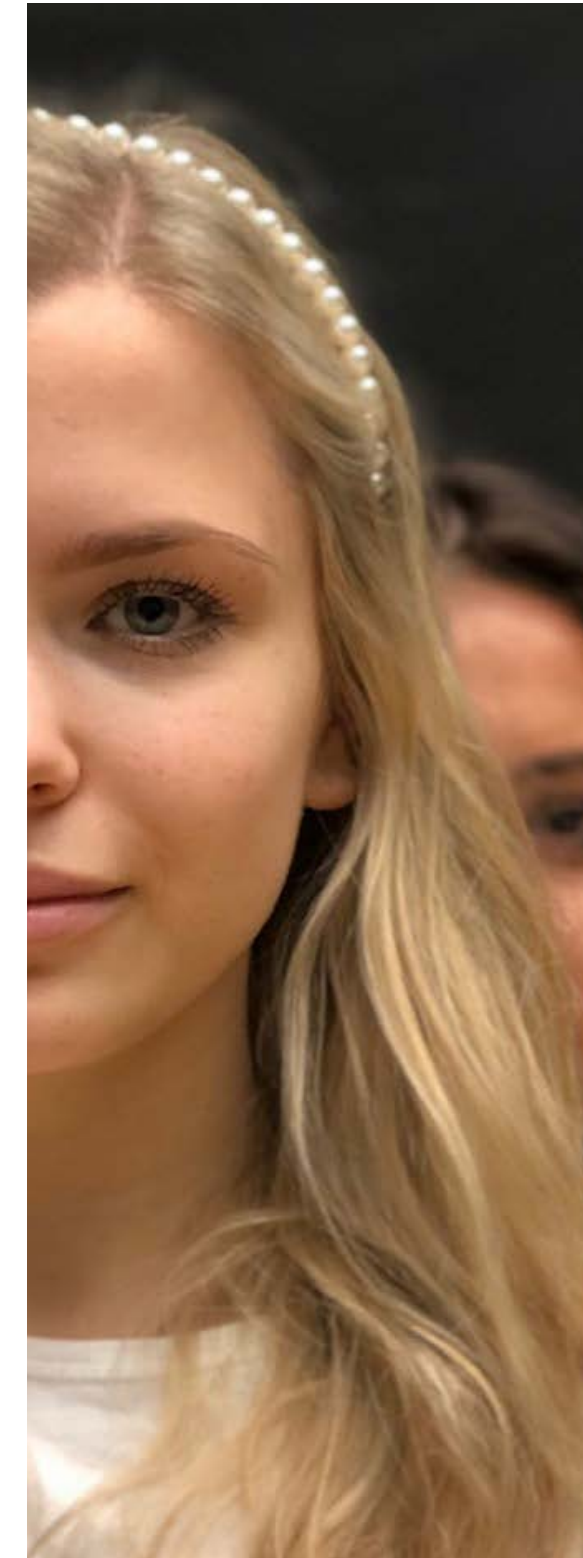
You will have many opportunities to perform in front of an audience. Although you will be assessed on your own skills and input, there is also a large amount of group work so you need to develop a real understanding of how to work as part of a team. You can opt for this course as well as A Level Drama and Theatre Studies if you choose; they will each give you different experiences.

WHERE WILL IT LEAD?

This course is aimed at people who want to learn about the Performing Arts industry. Students who successfully complete the qualification will be well equipped to move on to further studies at university or at a conservatoire.

In addition, we are currently investigating a full-time Level 3 Extended Diploma in Performing Arts practice which offer an opportunity to follow pathways in dance, acting or musical theatre. This qualification would be equivalent to 3 A Levels.

Course TBC by February 2024.



SPORT

BTEC L3 CERTIFICATES/DIPLOMAS

EXAM BOARD

Pearson (Edexcel)

ENTRY REQUIREMENTS

There are two diploma options for those students who want to study sport in the 6th Form. Both courses carry the same entry requirements. You will need five 9-5 grades at GCSE (including Maths and English Language), Distinction at L2 BTEC, grade 6 in GCSE PE or a Distinction in a Level 2 Cambridge National. If you haven't studied PE at GCSE Level, you will need five 9-5 grades at GCSE (including Maths and English Language).

ASSESSMENT

Both courses are modular; meaning that a particular topic is studied and assessed each term before students move on to a new topic area. The vast majority of work produced by students goes towards their final grade. Work is generally assignment based and marked internally, but each course also has external examination modules too.

COURSE LEADER

Mr Howard D'Arcy
01753 881637 • HowardD'Arcy@chalfonts.org

BTEC EXTENDED CERTIFICATE IN SPORT (EQUIVALENT TO 1 A LEVEL - 9 LESSONS) COURSE CODE: 601/7218/6

- 67% Exam, 33% Coursework (All exams must be passed in order to complete the course)

Exam Units studied: are: Anatomy and Physiology, Fitness Training & Programming .
Coursework Units studied are: Professional Development and Sports Leadership

BTEC NATIONAL DIPLOMA IN SPORT (EQUIVALENT TO 2 A LEVELS - 18 LESSONS) COURSE CODE: 603/0460/1

- 45% Exam, 55% Coursework (All exams must be passed in order to complete the course)

Exam Units studied are: Anatomy and Physiology, Fitness Training and Programming and Business in Sport

Coursework units are: Professional Development, Sports Leadership, Practical Sports Performance, Coaching for Performance, Skills Acquisition and Rules, Regulations and Officiating.

WHY SHOULD I CHOOSE ONE OF THESE COURSES?

You will need to be passionate about sport, the industry, our governing bodies, the development of participation initiatives and sport through the ages. You will need to have the capability to work independently and use research skills to gain more knowledge of new and interesting topics.

The BTEC course is more reliant on theoretical knowledge than a GCSE PE course so you will need to demonstrate excellent organisational skills, a deep knowledge of sport and its concepts and also have a passion for improving and developing your own knowledge of sport and the issues surrounding it.

Each module assesses your ability to digest information and apply it to a series of assignments. Each assignment will require a different format of presentation including essays, report writing, presentations, posters, video evidence, practical performance, officiating and coaching.

While some of the course is practically based, the majority of lessons are theoretical, and therefore provide excellent preparation for higher education.

WHERE WILL IT LEAD?

A qualification in BTEC Sport can provide pathways to many employment and higher education opportunities. You will be able to study courses in the sport and leisure industry, sports massage and physiotherapy, or become a PE teacher or coach. If you are interested in becoming a fitness instructor, running your own gym, looking for opportunities in recreational management or the health and fitness industry, this course may be the one for you.



THE ENRICHMENT PROGRAMME

It is essential that all students who choose to continue with their education into the 6th form are given the opportunity to develop more than just subject related academic skills. It is to this end that as part of 6th form life, you will be supported by your tutor with:

- A Personal Development Programme
- Skills Development

Personal Development

One of the keys to success in applications to Higher Education, further training and employment is the development of students as fully rounded individuals and it is vital that all students are involved in a programme which extends their skills and understanding.

Each individual will be asked to choose an area of The College where they feel that they can benefit as well as contribute. This may be within a subject area, Learning Support or linked to support staff. Many students choose to work with Key Stage 3 students within one of the subjects they are studying.

Other enrichment opportunities include;

- Duke of Edinburgh Award Scheme
- Young Enterprise
- Extended Project Qualification
- Journalism Course
- World Challenge
- Subject specific trips this school year are: Art/ Photography to Amsterdam, Business/Economics to the Financial District, City of London, English to WW1 Battlefields, France, Geography to Iceland and Swanage

Skills Development

This is the name we give to the particular part of your Enrichment Programme which includes many of the statutory aspects of Post 16 education.

Skills Development in Year 12 will include:

- A Careers and Progression programme
- The university application process
- Study and revision skills
- Citizenship
- Apprenticeship advice
- Financial Literacy
- Personal, Social and Health Education programme in tutor time

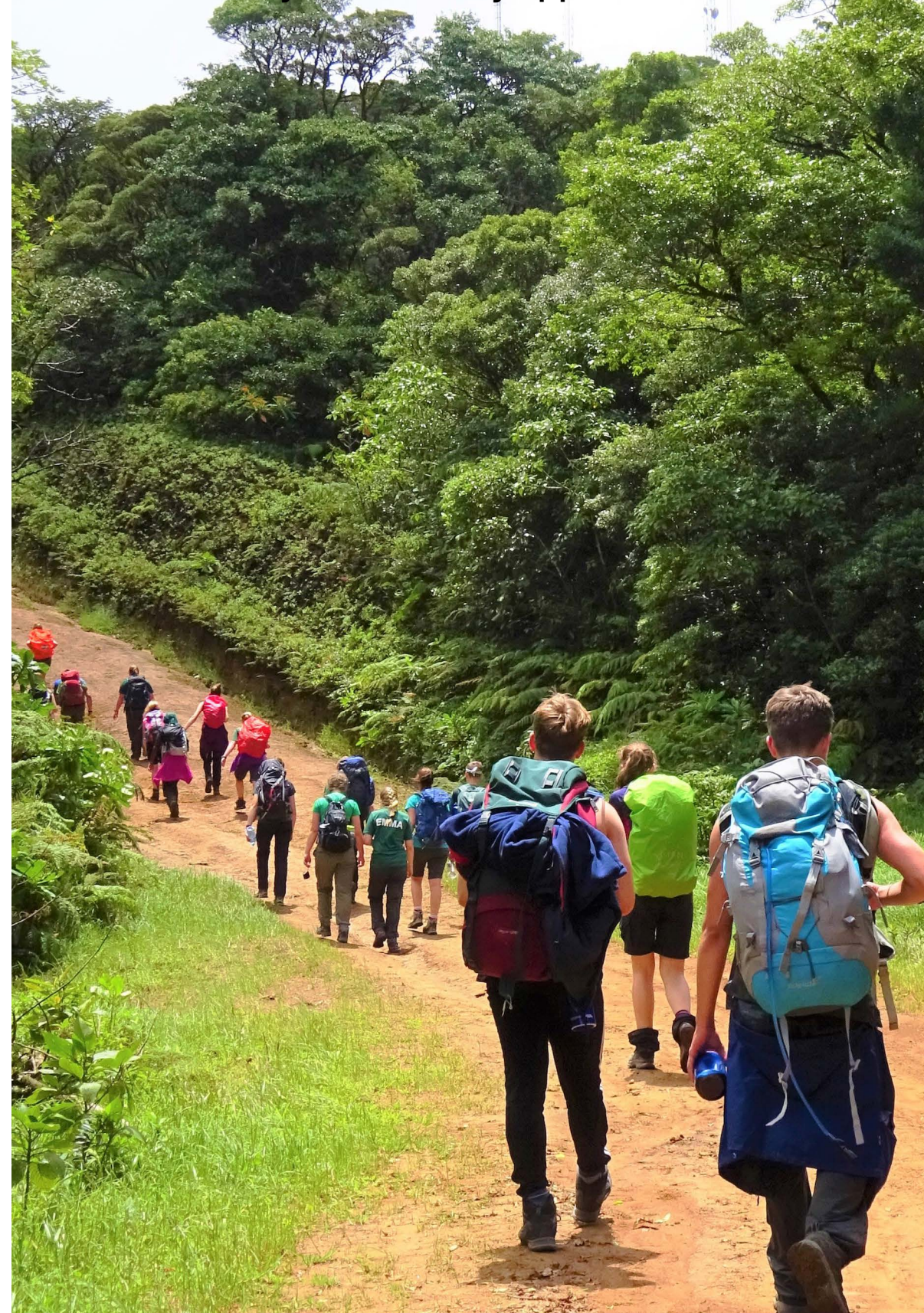
Physical Education/Recreation

It is widely recognised that as well as having a positive effect on health, physical exercise is hugely beneficial to improving concentration and reducing stress. Students will have the opportunity to take part in a range of competitive and recreational activities.

Learning Support

The Chalfonts Community College has an excellent reputation for its provision for Special Educational Needs, which extends into the 6th form as appropriate to student need. For more information, please contact Rachel Gregg, SENCO at: rachelgregg@chalfonts.org

The Chalfonts Community College provides lots of opportunities for personal development which will contribute to your university application or CV.



SECURE YOUR PLACE IN THE CHALFONTS 6TH FORM IN 2024

These are the next steps to joining the 6th Form at The Chalfonts. Dates are subject to change.

Month	Internal students	External students
November/December	Year 11 Mock Examinations	
January	Year 11 Mock Results published	Application form submitted to The Chalfonts Community College by 28th February 2024. References will then be obtained
	Year 11 Parents Evening 18th January	
February	6th Form Taster Day	6th Form Taster Day
March	6th Form Progression Interviews	
April/May	6th Form offers sent out	Interviews start
May/June	GCSE Examinations	
July	Return the acceptance of your offer by 15th July	
August	GCSE Results Day - Thursday 22nd August	
	Year 12 Enrolment Day - Thursday 22nd August	

Year 11 Mock GCSE Examinations

Get focused now! This is the only full trial of the 'real thing' that you are going to get – make sure you are prepared.

6th Form Taster Day

You become 6th Formers for the day (including 6th form dress) and get a chance to sample up to four different subjects.

Year 11 Parent's Evening

Find out from your subject teachers what you really need to do to get the best possible GCSE grades.

Progression Interviews

You will have an interview with a member of the Senior Leadership Team, Leader for 6th Form, Leader for Year 11 or another senior member of staff. These staff members will help guide your decisions about the choices you need to make. Following the interview, you will receive a letter with your offer of a place, conditional on you achieving the necessary grades.

6th Form Enrolment Day

This takes place at The College from 10.30am to 1.30pm. The Leader for the 6th Form, together with other senior staff will be there to discuss any changes needed, based on your actual GCSE results. External students, please bring in your exam results to complete enrolment.



A LAST WORD FROM THE PRINCIPAL

Moving into the 6th form is a big step and I am confident that joining the 6th Form at The Chalfonts Community College will provide you with a high quality education and excellent preparation for your next steps as an adult. We are very proud to offer a wide range of courses, which are taught by dedicated teachers who are specialists in their subjects.

The excellent teaching and enjoyable enrichment opportunities in a warm and friendly environment combine to make this the obvious choice for the next stage of your education.

I am immensely proud of our students and firmly believe that because we place our students first, your next two years with us will be both rewarding and challenging. The Chalfonts Community College is a fantastic place to learn and thrive and we truly believe that 'success is an attitude'. I look forward to welcoming you to the 6th Form and seeing you become one of our successes of the future.



Caroline Whitehead

KEY CONTACTS

COLLEGE ADDRESS

The Chalfonts Community College
Narcot Lane
Chalfonts St. Peter
SL9 8TP

GENERAL ENQUIRIES

T: 01753 882032
E: info@chalfonts.org
W: www.chalfonts.org

LEADER FOR 6TH FORM

Mr Martyn Way
T: 01753 881614
E: martynway@chalfonts.org

6TH FORM ADMINISTRATOR

TBC
T: 01753 881614
E: samanthaking@chalfonts.org

SENCO

Mr Alexander Maclean
T: 01753 881650
E: alexandermaclean@chalfonts.org

SCHOOL TRANSPORT

T: 01296 387439
E: buckscs.gov.uk

FOLLOW US

Twitter @ccc6thform
@ccchalfonts
Instagram @ccc_6th_form





"Success is an Attitude"